

# TRAFFIC COUNT DATABASE SYSTEM (TCDS) USER GUIDE

Brevard Metropolitan Planning Organization



**OPTION 1 - SEARCH BY MAP**  
Use the Map Tools to zoom to an area. Then click a marker or Select by Polygon to review locations and counts. Markers may not show up until zooming in closer.

**OPTION 2 - SEARCH BY DATA - TCDS**  
Select search criteria below, then click the "Search" button.

County	Brevard	
Community	- Select Community -	
Location ID	<input type="text"/>	<input type="radio"/> Exact Match <input type="radio"/> Starts With <input type="radio"/> Ends With
Type	ALL	
Located On	<input type="text"/>	<input type="checkbox"/> Exact Match
Route Type	ALL	
Route	<input type="text"/>	
More Detail ▶		
Direction	ALL	
Volume	Min # <input type="text"/> Max # <input type="text"/>	OR Select Year: ALL <input type="text"/>
Volume Trend	Min % <input type="text"/> Max % <input type="text"/>	Annual growth rate of Volume (e.g. 5%)
Count Date	From <input type="text"/> To <input type="text"/>	NOTE: Enter either or both dates to search count records within this range.
Counts Needed	Since <input type="text"/>	(MMDD/YYYY) - Locations not counted since this date
Class	<input type="text"/>	

The map on the right shows a geographic view of Brevard County, Florida, with major roads and cities labeled. It includes navigation tools like 'Map', 'Satellite', 'TOOLS', and 'LEGEND'. A scale bar indicates 20 miles and 20 kilometers.

Web Based Program Developed By:  
Midwestern Software Solutions  
[www.ms2soft.com](http://www.ms2soft.com)

June 2008

## I. Introduction

This guide has been developed to provide a brief explanation on how to use the Brevard MPO web based Traffic Count Database System (TCDS). The guide will provide you with the tools to use some of the common tasks performed. If, after reviewing the guide, you would like further details or assistance please contact the MPO office at 321-690-6890.

The Traffic Count Database System (TCDS) is a powerful tool that can be used to review current year volumes, historical data, trends or even 15 minute interval counts. Graphs, lists and reports can be viewed, printed or exported.

Introduction to the following commonly performed tasks will be covered:

- Searching for existing counts
- Interacting with the map to obtain detailed count information
- Viewing count details in graphical format

To begin, go to the Brevard MPO main page.

<http://gis.midwesternconsulting.com/tcds/tsearch.asp?loc=Brevard>

The page should look like Figure 1 below. This page will always be the starting point no matter what you wish to do. The “Home” button will bring you back to this main search page. Please note that this is NOT the browser Home button, but rather the TCDS Home button on the upper left corner.

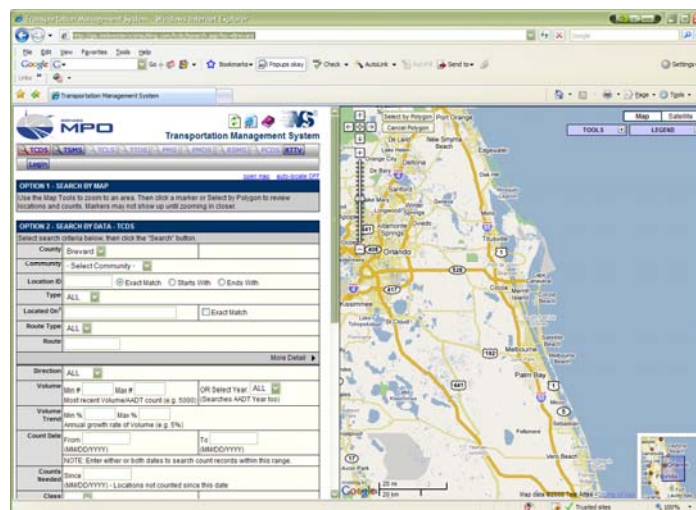


Figure 1 – Starting Point for all tasks.

## II. Searching the Database

You can search the database various ways. The first method is to search by Community using the drop down menu. For example, you may want to search counts located in the Cocoa area, so choose Cocoa, (Figure 2, A) and then click Search (Figure 2, G). You should have 215 results. (Figure 3, J). If you want to change your search fields, simply click on the Home button at the top of the TCDS page, (Figure 3, I). This will bring you back to the main search page. You can include more fields to narrow your search, or reset all fields to start a new search (Figure 2, H).

**OPTION 1 - SEARCH BY MAP**  
Use the Map Tools to zoom to an area. Then click a marker or Select by Polygon to review locations and counts. Markers may not show up until zooming in closer.

**OPTION 2 - SEARCH BY DATA - TCDS**  
Select search criteria below, then click the "Search" button.

County: Brevard

Community: Cocoa **A**

Location ID: **B**

Type: ALL

Located On: **C**  Exact Match

Route Type: ALL

Route:

Direction: ALL

Volume: Min # **D** OR Select Year: ALL **E**  
Most recent Volume/AADT count (e.g. 5000) (Searches AADT Year too)

Volume Trend: Min % Annual growth rate of Volume (e.g. 5%)

Count Date: From **F** To **F**  
(MMDD/YYYY) (MMDD/YYYY)  
NOTE: Enter either or both dates to search count records within this range.

Counts Needed: Since (MMDD/YYYY) - Locations not counted since this date

Class Counts?

Speed Counts?

Gap Counts?

Volume Counts?

AADT Counts?

Search **G** Build Search Reset Search **H**

Figure 2 – Search by Community

**Home** **TSMS** **TCLS** **TTDS** **PMS** **PMDS** **RSMS** **PCDS** **RTTV**

Record: 1 of 215 **J** Goto Record go

Location ID: 1 CMS Segment: 2030  
Type: LINK HPMS ID:  
Group: 01 Route Type:  
Fnc/I Class: - Route:  
Located On: SR 520  
From Road: SR 524  
To Road: Friday

From PR	From MP	To PR	To MP	Bgn PT	End PT
County	Brevard	Direction	2-WAY		
Community	Cocoa	Lanes	4		
Jurisdiction		Surface Type			
Category	UPAO	Latitude	28.359860		
		Longitude	-80.820270		

AADT						
Year	AADT	DHV-30	K %	D %	PA	BC
2007	8,110					

VOLUME COUNT			VOLUME TREND	
Date	Int	24-Hr Total	Year	Annual Growth
Thu 1/31/2008	15	12,571	2008	52%
Wed 1/30/2008	15	12,163		
Thu 1/18/2007	15	8,561		
Wed 1/17/2007	15	8,440		

SPEED					CLASSIFICATION		
Date	Int	Pace	85th	Total	Date	Int	Total

PARTIAL COUNT			GAP		
Date	Int	24-Hr Total	Date	Int	Total

ARCHIVED COUNTS	
Date	File

**NOTES**

Note	Date

Figure 3 – Cocoa Area Search

Use the "Location ID" (Figure 2, B) field if you know the count location ID number. There are over 500 count locations in Brevard, so unless you are sure of the number you should leave this field blank.

If you want to search by a specific road name, type the beginning of the road name in the "Located On" field (Figure 2, C). A list of possible matches will appear below the field in a drop down menu. You can select the exact road you desire from this list. Use Adamson as an example: as soon as you type in the letter "a", the list will appear and you can select Adamson.

All entries with Adamson as the "On" road will be displayed. The same principle applies to crossroads or routes. You do not need to search an "On" road to search for crossroads. It is recommended **NOT** to check the "Exact Match" box unless you are certain of the exact spelling on the entry in the desired record.

Another typical search criterion is "Count Date". Often you will want to narrow a search to a certain year or certain month range. You may enter this in the "Count Date" (Figure 2, F) fields. Use "Volume Year" (Figure 2, E) to search an entire year without specifying month and day. Only one date is necessary to generate a result. You may also search locations with a specific average daily volume. For example, the "Volume" (Figure 2, D) field may be used to find all locations that have 20,000 vehicles

daily. For the community of Cocoa this would result in 39 records (Figure 4). However, please note that when using these fields to form a search that the Brevard MPO conducts traffic counts annually from October to March and some locations are not counted every year. Also, the web based records currently only include the last two years of data, 2006-07 and 2007-08. The historical data will grow as each annual cycle of counts is added to the database.

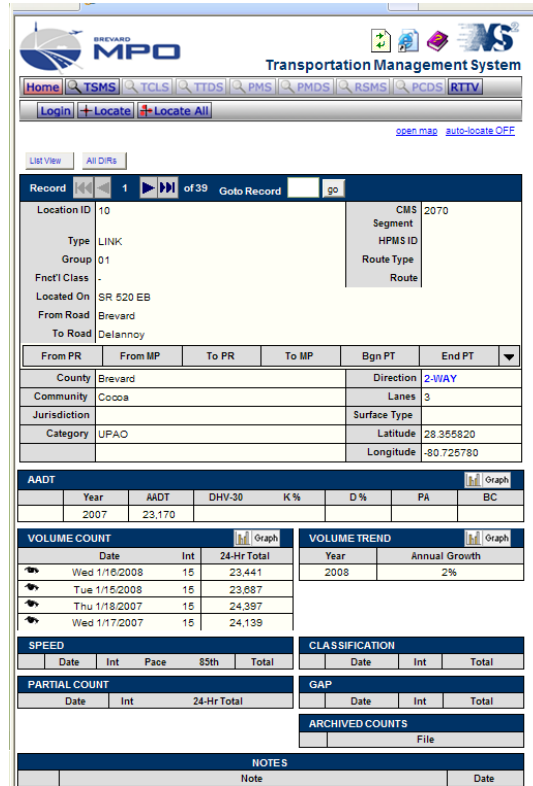


Figure 4, Search result of using minimum volume of 20,000 for Cocoa Community.

### III. Map Features

Google maps are a familiar feature to many users. You can pan, zoom, switch from road to satellite view, view count locations on the map, pull up count details from the map view.

From the search results page, (Figure 3) you can “Locate”, (Figure 3, K) a count on the map (Figure 5). The blue push pin indicates the selected count, with red push pins showing where other counts are located. The larger red push pins with a black dot indicate the count “From” and “To” points.



Figure 5, Map View of Located Count

When you move the mouse cursor over the pin, the Location ID will appear. Click on the pin and more information will appear. The direction of the count and most recent ADT volume will be listed (Figure 6). If there is more than one count or multiple directions, each will be listed.

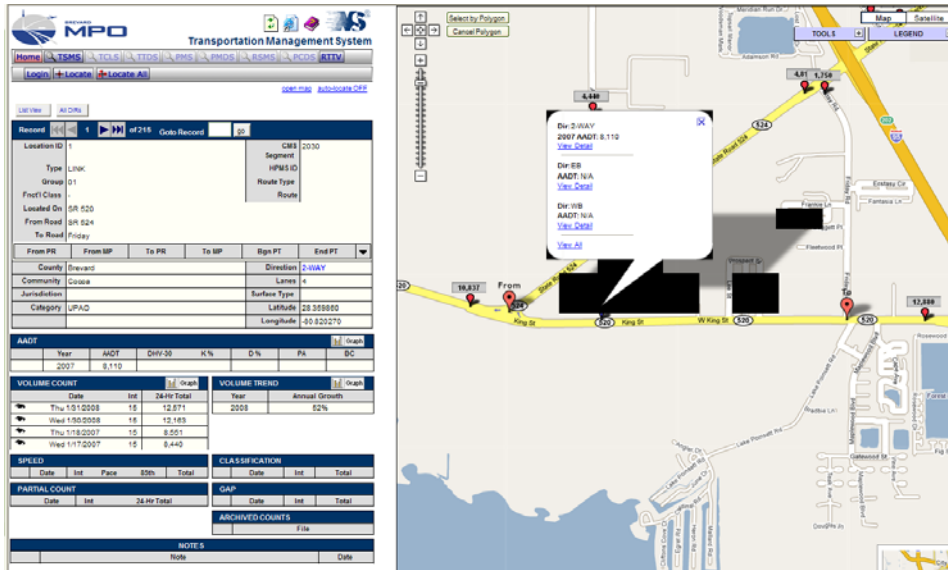


Figure 6

The most recent 2-way count volume is displayed above the pin at all times in a gray box. When the direction and volume window appear, a link to “View Detail” is also displayed. If you click on this link, the left side of the window will go directly to the information for this location. If there is a Volume count available at this location you can view the count details by clicking the “eye” next to the count you wish to view. Figure 7 is an example of the count details that would be shown if you selected the volume count for Thu 1/31/2008, both directions.

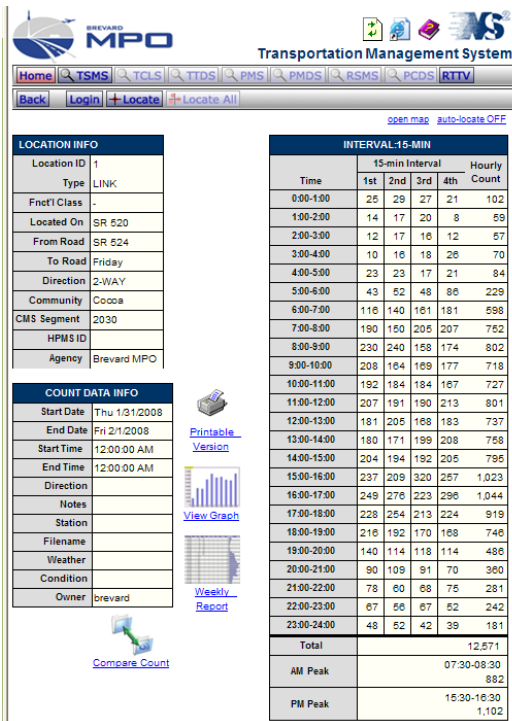


Figure 7 – 15 minute volume detail for Thursday January 31, 2008, both directions.

You can also view detail by direction for this location by clicking on the Eastbound (EB) or Westbound (WB) “View Detail” link.

## IV. Graphs and Reports

You may wish to take data and use it in another application, or insert it into a presentation or report. All reports are standard and use the results from the last search you performed. From the detail page of a count you can choose to have the data displayed in a printable format, view a graph of the data, (Figure 8) or a weekly report (Figure 9).

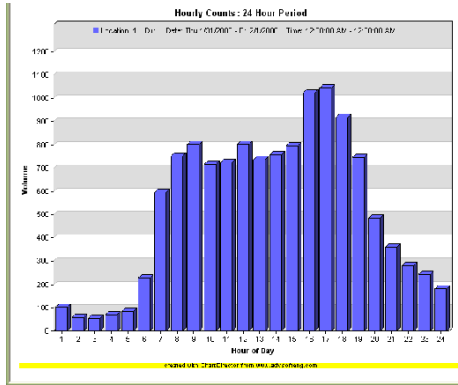


Figure 8, Graph of 15 minute interval counts from Figure 7.

Interval	Volume	Interval	Volume
12:00 AM	89	1:15 AM	107
12:15 AM	89	1:30 AM	94
12:30 AM	90	1:45 AM	89
12:45 AM	89	2:00 AM	78
1:00 AM	116	2:15 AM	90
1:15 AM	228	2:30 AM	210
1:30 AM	393	2:45 AM	219
1:45 AM	796	3:00 AM	219
2:00 AM	854	3:15 AM	213
2:15 AM	796	3:30 AM	240
2:30 AM	796	3:45 AM	240
2:45 AM	796	4:00 AM	240
3:00 AM	879	4:15 AM	240
3:15 AM	796	4:30 AM	240
3:30 AM	718	4:45 AM	237
3:45 AM	796	5:00 AM	234
4:00 AM	808	5:15 AM	230
4:15 AM	834	5:30 AM	230
4:30 AM	865	5:45 AM	230
4:45 AM	888	6:00 AM	230
5:00 AM	928	6:15 AM	230
5:15 AM	962	6:30 AM	230
5:30 AM	1044	6:45 AM	230
5:45 AM	1065	7:00 AM	230
6:00 AM	1065	7:15 AM	230
6:15 AM	1065	7:30 AM	230
6:30 AM	1065	7:45 AM	230
6:45 AM	1065	8:00 AM	230
7:00 AM	1065	8:15 AM	230
7:15 AM	1065	8:30 AM	230
7:30 AM	1065	8:45 AM	230
7:45 AM	1065	9:00 AM	230
8:00 AM	1065	9:15 AM	230
8:15 AM	1065	9:30 AM	230
8:30 AM	1065	9:45 AM	230
8:45 AM	1065	10:00 AM	230
9:00 AM	1065	10:15 AM	230
9:15 AM	1065	10:30 AM	230
9:30 AM	1065	10:45 AM	230
9:45 AM	1065	11:00 AM	230
10:00 AM	1065	11:15 AM	230
10:15 AM	1065	11:30 AM	230
10:30 AM	1065	11:45 AM	230
10:45 AM	1065	12:00 AM	230
11:00 AM	1065	12:15 AM	230
11:15 AM	1065	12:30 AM	230
11:30 AM	1065	12:45 AM	230
11:45 AM	1065	1:00 AM	230
12:00 AM	1065	1:15 AM	230
12:15 AM	1065	1:30 AM	230
12:30 AM	1065	1:45 AM	230
12:45 AM	1065	2:00 AM	230
1:00 AM	1065	2:15 AM	230
1:15 AM	1065	2:30 AM	230
1:30 AM	1065	2:45 AM	230
1:45 AM	1065	2:00 AM	230
2:00 AM	1065	2:15 AM	230
2:15 AM	1065	2:30 AM	230
2:30 AM	1065	2:45 AM	230
2:45 AM	1065	3:00 AM	230
3:00 AM	1065	3:15 AM	230
3:15 AM	1065	3:30 AM	230
3:30 AM	1065	3:45 AM	230
3:45 AM	1065	4:00 AM	230
4:00 AM	1065	4:15 AM	230
4:15 AM	1065	4:30 AM	230
4:30 AM	1065	4:45 AM	230
4:45 AM	1065	5:00 AM	230
5:00 AM	1065	5:15 AM	230
5:15 AM	1065	5:30 AM	230
5:30 AM	1065	5:45 AM	230
5:45 AM	1065	6:00 AM	230
6:00 AM	1065	6:15 AM	230
6:15 AM	1065	6:30 AM	230
6:30 AM	1065	6:45 AM	230
6:45 AM	1065	7:00 AM	230
7:00 AM	1065	7:15 AM	230
7:15 AM	1065	7:30 AM	230
7:30 AM	1065	7:45 AM	230
7:45 AM	1065	8:00 AM	230
8:00 AM	1065	8:15 AM	230
8:15 AM	1065	8:30 AM	230
8:30 AM	1065	8:45 AM	230
8:45 AM	1065	9:00 AM	230
9:00 AM	1065	9:15 AM	230
9:15 AM	1065	9:30 AM	230
9:30 AM	1065	9:45 AM	230
9:45 AM	1065	10:00 AM	230
10:00 AM	1065	10:15 AM	230
10:15 AM	1065	10:30 AM	230
10:30 AM	1065	10:45 AM	230
10:45 AM	1065	11:00 AM	230
11:00 AM	1065	11:15 AM	230
11:15 AM	1065	11:30 AM	230
11:30 AM	1065	11:45 AM	230
11:45 AM	1065	12:00 AM	230
12:00 AM	1065	12:15 AM	230
12:15 AM	1065	12:30 AM	230
12:30 AM	1065	12:45 AM	230
12:45 AM	1065	1:00 AM	230
1:00 AM	1065	1:15 AM	230
1:15 AM	1065	1:30 AM	230
1:30 AM	1065	1:45 AM	230
1:45 AM	1065	2:00 AM	230
2:00 AM	1065	2:15 AM	230
2:15 AM	1065	2:30 AM	230
2:30 AM	1065	2:45 AM	230
2:45 AM	1065	3:00 AM	230
3:00 AM	1065	3:15 AM	230
3:15 AM	1065	3:30 AM	230
3:30 AM	1065	3:45 AM	230
3:45 AM	1065	4:00 AM	230
4:00 AM	1065	4:15 AM	230
4:15 AM	1065	4:30 AM	230
4:30 AM	1065	4:45 AM	230
4:45 AM	1065	5:00 AM	230
5:00 AM	1065	5:15 AM	230
5:15 AM	1065	5:30 AM	230
5:30 AM	1065	5:45 AM	230
5:45 AM	1065	6:00 AM	230
6:00 AM	1065	6:15 AM	230
6:15 AM	1065	6:30 AM	230
6:30 AM	1065	6:45 AM	230
6:45 AM	1065	7:00 AM	230
7:00 AM	1065	7:15 AM	230
7:15 AM	1065	7:30 AM	230
7:30 AM	1065	7:45 AM	230
7:45 AM	1065	8:00 AM	230
8:00 AM	1065	8:15 AM	230
8:15 AM	1065	8:30 AM	230
8:30 AM	1065	8:45 AM	230
8:45 AM	1065	9:00 AM	230
9:00 AM	1065	9:15 AM	230
9:15 AM	1065	9:30 AM	230
9:30 AM	1065	9:45 AM	230
9:45 AM	1065	10:00 AM	230
10:00 AM	1065	10:15 AM	230
10:15 AM	1065	10:30 AM	230
10:30 AM	1065	10:45 AM	230
10:45 AM	1065	11:00 AM	230
11:00 AM	1065	11:15 AM	230
11:15 AM	1065	11:30 AM	230
11:30 AM	1065	11:45 AM	230
11:45 AM	1065	12:00 AM	230
12:00 AM	1065	12:15 AM	230
12:15 AM	1065	12:30 AM	230
12:30 AM	1065	12:45 AM	230
12:45 AM	1065	1:00 AM	230
1:00 AM	1065	1:15 AM	230
1:15 AM	1065	1:30 AM	230
1:30 AM	1065	1:45 AM	230
1:45 AM	1065	2:00 AM	230
2:00 AM	1065	2:15 AM	230
2:15 AM	1065	2:30 AM	230
2:30 AM	1065	2:45 AM	230
2:45 AM	1065	3:00 AM	230
3:00 AM	1065	3:15 AM	230
3:15 AM	1065	3:30 AM	230
3:30 AM	1065	3:45 AM	230
3:45 AM	1065	4:00 AM	230
4:00 AM	1065	4:15 AM	230
4:15 AM	1065	4:30 AM	230
4:30 AM	1065	4:45 AM	230
4:45 AM	1065	5:00 AM	230
5:00 AM	1065	5:15 AM	230
5:15 AM	1065	5:30 AM	230
5:30 AM	1065	5:45 AM	230
5:45 AM	1065	6:00 AM	230
6:00 AM	1065	6:15 AM	230
6:15 AM	1065	6:30 AM	230
6:30 AM	1065	6:45 AM	230
6:45 AM	1065	7:00 AM	230
7:00 AM	1065	7:15 AM	230
7:15 AM	1065	7:30 AM	230
7:30 AM	1065	7:45 AM	230
7:45 AM	1065	8:00 AM	230
8:00 AM	1065	8:15 AM	230
8:15 AM	1065	8:30 AM	230
8:30 AM	1065	8:45 AM	230
8:45 AM	1065	9:00 AM	230
9:00 AM	1065	9:15 AM	230
9:15 AM	1065	9:30 AM	230
9:30 AM	1065	9:45 AM	230
9:45 AM	1065	10:00 AM	230
10:00 AM	1065	10:15 AM	230
10:15 AM	1065	10:30 AM	230
10:30 AM	1065	10:45 AM	230
10:45 AM	1065	11:00 AM	230
11:00 AM	1065	11:15 AM	230
11:15 AM	1065	11:30 AM	230
11:30 AM	1065	11:45 AM	230
11:45 AM	1065	12:00 AM	230
12:00 AM	1065	12:15 AM	230
12:15 AM	1065	12:30 AM	230
12:30 AM	1065	12:45 AM	230
12:45 AM	1065	1:00 AM	230
1:00 AM	1065	1:15 AM	230
1:15 AM	1065	1:30 AM	230
1:30 AM	1065	1:45 AM	230
1:45 AM	1065	2:00 AM	230
2:00 AM	1065	2:15 AM	230
2:15 AM	1065	2:30 AM	230
2:30 AM	1065	2:45 AM	230
2:45 AM	1065	3:00 AM	230
3:00 AM	1065	3:15 AM	230
3:15 AM	1065	3:30 AM	230
3:30 AM	1065	3:45 AM	230
3:45 AM	1065	4:00 AM	230
4:00 AM	1065	4:15 AM	230
4:15 AM	1065	4:30 AM	230
4:30 AM	1065	4:45 AM	230
4:45 AM	1065	5:00 AM	230
5:00 AM	1065	5:15 AM	230
5:15 AM	1065	5:30 AM	230
5:30 AM	1065	5:45 AM	230
5:45 AM	1065	6:00 AM	230
6:00 AM	1065	6:15 AM	230
6:15 AM	1065	6:30 AM	230
6:30 AM	1065	6:45 AM	230
6:45 AM	1065	7:00 AM	230
7:00 AM	1065	7:15 AM	230
7:15 AM	1065	7:30 AM	230
7:30 AM	1065	7:45 AM	230
7:45 AM	1065	8:00 AM	230
8:00 AM	1065	8:15 AM	230
8:15 AM	1065	8:30 AM	230
8:30 AM	1065	8:45 AM	230
8:45 AM	1065	9:00 AM	230
9:00 AM	1065	9:15 AM	230
9:15 AM	1065	9:30 AM	230
9:30 AM	1065	9:45 AM	230
9:45 AM	1065	10:00 AM	230
10:00 AM	1065	10:15 AM	230
10:15 AM	1065	10:30 AM	230
10:30 AM	1065	10:45 AM	230
10:45 AM	1065	11:00 AM	230
11:00 AM	1065	11:15 AM	230
11:15 AM	1065	11:30 AM	230
11:30 AM	1065	11:45 AM	230
11:45 AM	1065	12:00 AM	230
12:00 AM	1065	12:15 AM	230
12:15 AM	1065	12:30 AM	230
12:30 AM	1065	12:45 AM	230
12:45 AM	1065	1:00 AM	230
1:00 AM	1065	1:15 AM	230
1:15 AM	1065	1:30 AM	230
1:30 AM	1065	1:45 AM	230
1:45 AM	1065	2:00 AM	230
2:00 AM	1065	2:15 AM	230
2:15 AM	1065	2:30 AM	230
2:30 AM	1065	2:45 AM	230
2:45 AM	1065	3:00 AM	230
3:00 AM	1065	3:15 AM	230
3:15 AM	1065	3:30 AM	230
3:30 AM	1065	3:45 AM	230
3:45 AM	1065	4:00 AM	230
4:00 AM	1065	4:15 AM	230
4:15 AM	1065	4:30 AM	230
4:30 AM	1065	4:45 AM	230
4:45 AM	1065	5:00 AM	230
5:00 AM	1065	5:15 AM	230
5:15 AM	1065	5:30 AM	230
5:30 AM	1065	5:45 AM	230
5:45 AM	1065	6:00 AM	230
6:00 AM	1065	6:15 AM	230
6:15 AM	1065	6:30 AM	230
6:30 AM	1065	6:45 AM	230
6:45 AM	1065	7:00 AM	230
7:00 AM	1065	7:15 AM	230
7:15 AM	1065	7:30 AM	230
7:30 AM	1065	7:45 AM	230
7:45 AM	1065	8:00 AM	230
8:00 AM	1065	8:15 AM	230
8:15 AM	1065	8:30 AM	230
8:30 AM	1065	8:45 AM	230
8:45 AM	1065	9:00 AM	230
9:00 AM	1065	9:15 AM	230
9:15 AM	1065	9:30 AM	230
9:30 AM	1065	9:45 AM	230
9:45 AM</			