

# SPACE COAST TRANSPORTATION PLANNING ORGANIZATION

2010 ANNUAL REPORT





# MISSION STATEMENT

To provide Space Coast local governments,  
agencies and citizens a forum for cooperative  
intermodal transportation decision-making to  
assure excellence in mobility and safety.



The preparation of this report has been financed in part through grant(s) from the Federal Highway Administration and Federal Transit Administration, U.S. Department of Transportation, under the State Planning and Research Program, Section 505 [or Metropolitan Planning Program, Section 104(f) of Title 23, U.S. Code. The contents of this report do not necessarily reflect the official views or policy of the U. S. Department of Transportation.

# From the Chairman

Dear Neighbor,

It is my pleasure to present the Space Coast Transportation Planning Organization's (TPO's) Fiscal Year 2010 Annual Report. This report highlights our major accomplishments, programs and activities from July 1, 2009 through June 30, 2010.

It has been a busy year. The widening of I-95 through Brevard has been on the TPO's Project Priority list since 1996. This phased widening project will add two lanes and guardrails for the entire stretch of the Interstate in Brevard and is in various stages of development/construction. The 12.4 mile portion from Fiske Boulevard to SR 528 is complete and the new interchange at the extension of the Pineda Causeway is scheduled to be open for traffic in 2011.

These and many other accomplishments are detailed in the pages that follow. These projects would not have been possible without the active support of our many partners at the Federal, State and local level, as well as private partners and concerned citizens. It truly is a team effort.

Sincerely,



Larry L. Schultz, Chairman  
Space Coast Transportation Planning Organization



# State of the System (SOS)

Each year, the Space Coast Transportation Planning Organization (TPO) publishes the State of the System (SOS) report. This report highlights current conditions and trends on the County's transportation system. Information from the report is used by the TPO to determine transportation funding priorities and potential improvement strategies.

Some key findings from the 2009 State of the System Report included:

- Vehicle Miles of Travel (VMT) per person is calculated by dividing the total VMT by the total population in the County. The VMT per person indicates how far, on average, County residents are traveling per day. From 2005 to 2009 the VMT per person dropped: 21.74 miles in 2009 as compared to 22.89 miles in 2005. Even though the population has increased from 531,970 in 2005 to 554,059 in 2009, each resident (on average) is driving fewer miles per day.

Vehicle Miles of Travel (VMT) Per Person		
Year	VMT Per Person	% Change
2005	22.89	
2006	23.35	2.0%
2007	23.05	-1.3%
2008	22.61	-1.9%
2009	21.74	-4.0%

- Systemwide vehicle miles traveled (VMT) decreased by 4% in 2009. This follows a slight decrease of -1.9% in 2008. The greater decrease is most likely due to the rise in gasoline prices.

- The Countywide crash rate decreased significantly (35%) from 2008 to 2009. The crash rate in 2008 increased by 21 % from 2007, making the rate for 2009 more in line with historical averages. The 2009 rate of 1.84 crashes per million vehicle miles of travel is down from a rate of 2.81 in 2008.

- Transit ridership on the County's fixed route bus system increased by 12 % from 2008 to 2009. The increase in transit ridership, coupled with a decrease in traffic volumes, indicates County residents could be making a shift to transit.

- Melbourne International Airport's total number of passenger boardings decreased by 24 % in 2009. This is higher than the six percent decline Statewide.

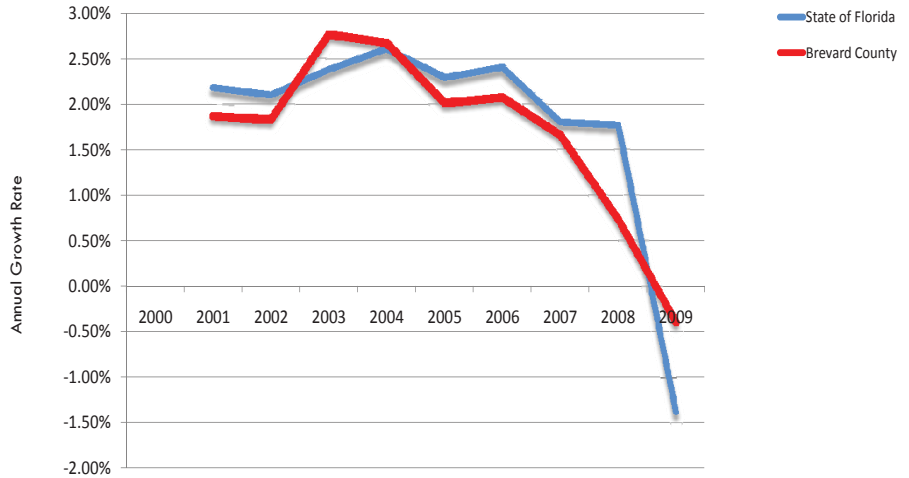
- Total cargo tonnage at Port Canaveral increased by 10 percent. Port Canaveral was the only port in Florida to have significant increase in cargo activity in 2009. Total cruise ship passengers decreased slightly (3%).

The complete State of the System Report may be downloaded from the TPO website: [www.spacecoasttpo.com](http://www.spacecoasttpo.com).

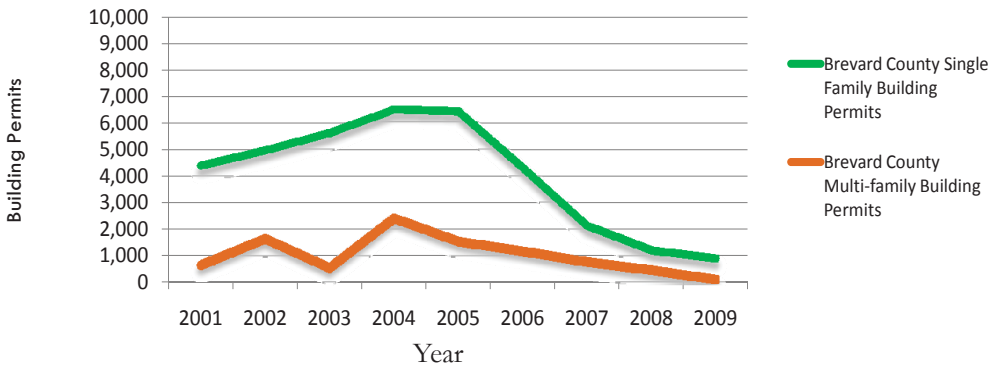


### POPULATION GROWTH RATE

In 2009 there was an unprecedented decrease in the number of people living in Florida and Brevard County. Prior to 2007, Brevard County experienced a population growth between two and three percent annually. In 2009, Brevard's population decreased by just over 2,100 people (about a half of a percent).



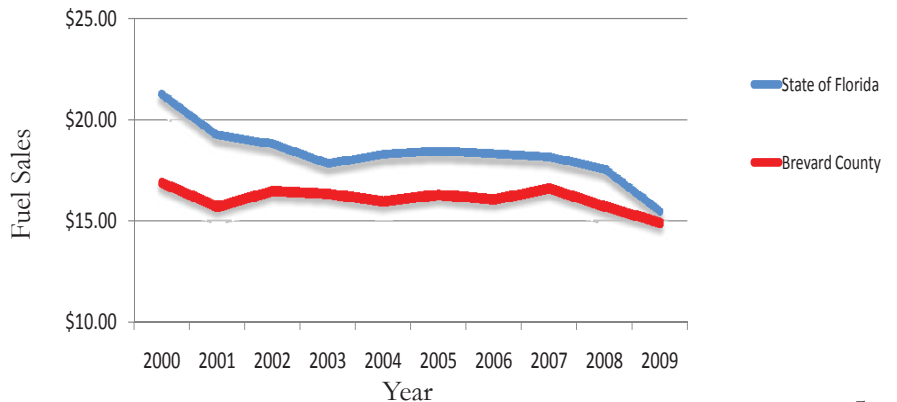
### NEW HOUSING PERMITS



The number of new housing permits dropped from a high of 8,925 in 2004, to 1,010 in 2009, representing a decrease of over 88%.

In 2008, total gasoline sales in Brevard County dropped by 5 percent, the first notable decline since data began to be tracked in 2001. In 2009, prices increased from January to June by almost \$1.00, and peaked at \$2.68 per gallon. The 2009 peak price was \$1.40 less than the peak price in 2008.

### FUEL SALES PER WEEK (PER VEHICLE)



# State of the System

As part of the SOS, roadway corridors are ranked based on: severity of existing congestion, severity of future anticipated congestion without improvements, existing traffic volume, intermodal connectivity/economic significance, crash history, safety concerns, hurricane evacuation and, prior funding commitments.

Results of the Roadway Priority Rankings are used to develop transportation priorities in Brevard County. Using these rankings, TPO staff work with County, Municipal, Florida Department of Transportation and other transportation provider staff to identify improvements that may be completed with available funding. Recommendations are then provided to the TPO Board for consideration.



## Roadway Priority Rankings in 2009

### Strategic Intermodal System (SIS) Roadways [I-95 and SR 528]

2009 Rank	2008 Rank	Change	Roadway
1	3	2	I-95: US 192 – Eau Gallie (SR 518)
2	4	2	I-95: Palm Bay Rd. – US 192
3	6	3	I-95: Fiske – SR 520
4	2	-2	I-95: Eau Gallie (SR 518) – Wickham Rd.
5	5	0	I-95: Wickham Rd. – Fiske Blvd
6	7	1	I-95: SR 520 – SR 524
7	14	7	SR 528: Orange County Line - SR 407
8	8	0	I-95: SR 524 – SR 528
9	1	-8	I-95: Malabar (SR 514) – Palm Bay Rd.
10	12	2	I-95: SR 528 - Port St. John Interchange

### Non-Strategic Intermodal System Roadways

2009 Rank	2008 Rank	Change	Roadway
1	5	4	Babcock: Foundation Park – Malabar
2	3	1	US 1: Barton – Florida
3	2	-1	US 1: Eyster – Barton
4	46	42	Malabar: Jupiter - Minton
5	1	-4	SR 520 (EB): Delannoy – Riveredge
6	9	3	US 1: Rosa Jones (Poinsett) – SR 520
7	12	5	US 1: Florida - Rosa Jones
8	4	-4	SR 520 (WB): Delannoy – Brevard
9	64	55	Babcock: Valkaria - Foundation Park
10	7	-3	SR 520 (EB): Brevard – Delannoy

\* The segments of Malabar Road (#4) and Babcock Road (#9) are ranked higher in 2009 based on updated future year volume projections.



Babcock at Palm Bay



Eau Gallie at US 1



Wickham at US 192

## Busiest Intersections

More than three quarters of the top twenty busiest intersections are located in south Brevard County, and all of the impacted corridors access I-95. Four of the twenty busiest intersections are located along Palm Bay Road, and five are located on US 192. Nearly all of the top 20 intersections from 2008 have remained at the top of the 2009 list, with the exception of SR 520 at US 1 (#20 in 2008), where volumes decreased largely due to the reconstruction of the intersection.

## High Volume Intersections

Rank	Intersection	Volume
1	Babcock @ Palm Bay	64,487
2	Eau Gallie @ US 1	63,063
3	Wickham @ US 192	62,501
4	SR 520 @ N. Courtenay	59,270
5	Eau Gallie @ Wickham	58,275
6	Wickham @ Sarno	57,813
7	US 1 @ Sarno	56,447
8	US 1 @ US 192	54,314
9	Babcock @ Malabar	52,935
10	Palm Bay @ Minton	52,419
11	US 192 @ Babcock	52,218
12	Hollywood @ Palm Bay	51,740
13	Evans @ US 192	50,418
14	Malabar @ San Fillippo	49,850
15	Wickham @ Murrell	49,383
16	SR 520 @ N. Tropical Trail	49,265
17	S. Patrick @ Eau Gallie	49,143
18	Minton @ Emerson	49,020
19	Dairy @ US 192	49,010
20	Palm Bay @ Dairy	48,606

# Work Products

## Long Range Transportation Plan

The Space Coast TPO is developing a 2035 Long Range Transportation Plan (LRTP). The LRTP is the focal point of the TPO's planning and programming activities. This federally required long-term planning document includes long and short-range strategies and actions to support the development of an integrated intermodal transportation system that facilitates the safe and efficient movements of people and goods.

TPO staff and their consultant worked with FDOT on the development of a forecasting travel demand model, which presents travel implications based on projected development patterns. Results were reviewed and potential needs (projects) analyzed by evaluating system alternatives and selecting those options which best meet the projected mobility needs of the TPO's planning region. Decisions were made with consideration to financial, social and environmental constraints. Guidance and assistance was provided throughout the planning process by the Long Range Plan Advisory Committee, which included technical advisors from local entities and FDOT.

The 2035 LRTP will be brought before the TPO Board for consideration on October 14, 2010.

## Project Priorities

The development of a Priority List is a very important step in the planning cycle, as it is the first step in the process of implementing transportation improvement projects.

On March 25, 2010, the TPO solicited requests for State and Federally funded candidate projects from local governments and transportation agencies. It was encouraged that all project requests be adopted by their municipal Council, Commission or Board to ensure agency and public support for the requested projects.

Many factors are considered when developing the Project Priorities List, including: the Long Range Transportation Plan, Strategic Intermodal System Plan, historic standing of projects within the Project Priority List, and prior funding commitments. Results of the Annual State of the System Report are also examined for such factors as hurricane and other emergency evacuation needs, crash history and public safety, regional connectivity and current/future traffic volumes and level of service standards.

The Transportation Growth Management Subcommittee (GMSC), comprised of staff planners and engineers from Brevard County local governments, met on June 16, 2010 to review the status of the previous year's priorities and evaluate new project requests. The GMSC developed a Draft project priority list recommendation which was presented at a public meeting on July 26, 2010. Additional comments were solicited from the Technical & Citizens Advisory Committees on September 7, 2010. These comments are then considered during the development of the final Draft Project Priority List.

The 2010 final Draft Project Priorities was adopted by the TPO Board on September 9, 2010. This approved list was then transmitted to FDOT's District Five office for use in the development of the Department's Tentative 5-Year Work Program.

## DRAFT PROJECT PRIORITIES (as of June 2010)

Location of Project	Ultimate Implementation Description
I-95	Widen to 6 Lanes: Indian River Co. - Volusia Co.
I-95/ St. John's Heritage Parkway	New Interchanges at North and South Termini
I-95	Implement Findings of System Operations Analysis Report (SOAR)
SR 528	Widen to Six Lanes: SR 520 - Port Canaveral
US 192	Widen to Six Lanes Divided: I-95 - Babcock St
ITS Countywide	Construct Operational Center and Expand Infrastructure
St. John's Heritage/Palm Bay Parkway	New Corridor: Melbourne Airport to Interchange Between Grant Rd. and Micco Rd. Plus Extension to Micco Rd.
SR A1A Corridor	Implement Complete Streets: Pineda to Port Canaveral
Babcock St.	Widen Corridor/Intersections
Malabar Rd.	Widen to 4 Lanes: Babcock St. to US 1
SR 524: I-95 Interchange to Industry/SR 501(Clearlake):Michigan to Industry	Construct Lanes, Intersection Improvement
Park Ave.	Reconstruct and Widen to 2 Lane Divided From South St. to DRAA
SR 405 (South St.)	Widen to 4 Lane Divided Urban: From SR 50 - Collins Ave.
US 1	Widen to 6 Lanes (3.8 Mi) from Pine St. to Cidco Rd.
US 192 @ Dairy Rd.	Add Left Turn Lanes
Wickham Rd.	Re-Align Intersections @ Nasa Blvd. & Ellis Rd.
Wickham Rd. "Intelligent Traffic System"	Install: Sarno Rd. – I-95

### Enhancement Projects

The TPO also prioritizes activities such as safe bicycle and pedestrian facilities, scenic routes, beautification and other investments that increase opportunities for recreation, accessibility and safety for everyone beyond traditional roadway programs. Transportation Enhancement funds are used to implement these projects. FDOT sets the schedule for Enhancements, based on the availability of funding. The TPO last adopted enhancement Priorities in May 2008. The five highest ranked projects in Brevard County are listed in the table below.

### ENHANCEMENT PROJECT PRIORITIES

Name of Project	TPO Rank	Project Description
Brevard County Showcase Trails; Brevard County	1	Construct and pave trails, signage and amenities along the following trails: East Central Florida Regional Rail Trail; South Brevard 'Al Tuttle' Trail; Brevard Zoo Trail; and, North Merritt Island Pioneer Trail.
SR A1A Corridor/Beach Access Improvement; City of Satellite Beach	2	Construct 2.8 miles of paved pedestrian/bicycle trail on the west side of SR A1A with improvements to seven beach access points.
Palm Bay Cross City Linear Trail; City of Palm Bay	3	Planning activities and a comprehensive PD&E study for the development of a multi-use trail system along FP&L easement that traverses the City.
Bracco Pond Reservoir Park; City of Cocoa	4	Proposed park system includes construction of 2.33 miles of stabilized and paved trails for the benefit of bicyclists and pedestrians within 57.43 acres of uplands which serves as storm water and retention ponds.
SE Palm Bay Sidewalks; City of Palm Bay	5	Construction of sidewalks on DeGroot Road, San Filippo Drive and Eldron Blvd. which will compliment the City's proposed Safe Routes to School program and provides access to Southeast Community Park. They will also compliment the South Brevard Linear Trail as an alternate route for Babcock Street.

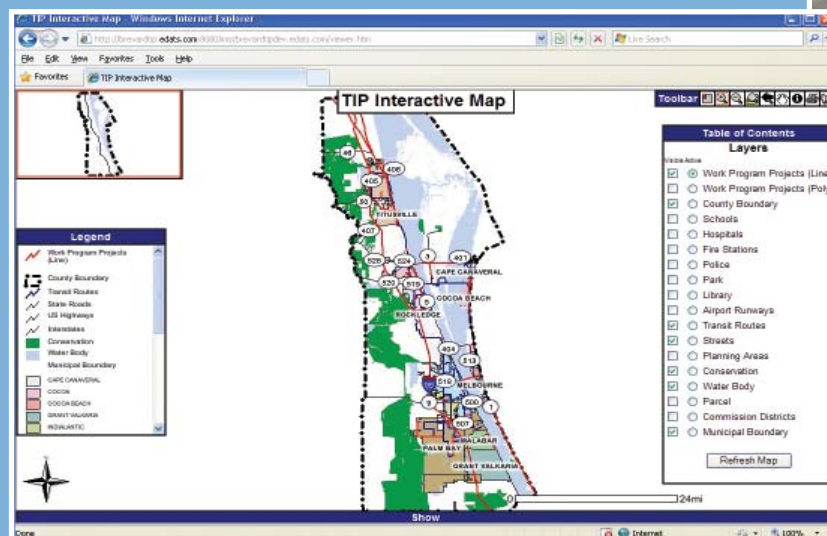
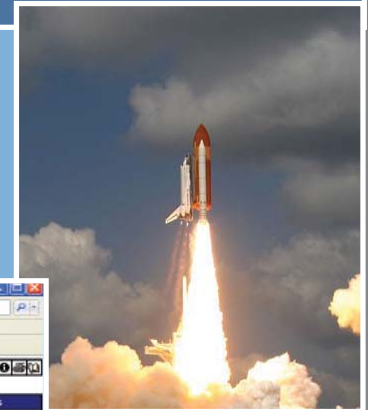
# Work Products



## Transportation Improvement Program (TIP)

The Transportation Improvement Program (TIP) is a five-year financially feasible program of multi-modal transportation improvement projects (including bicycle/pedestrian/trail facilities, transportation enhancements, transit, seaport, airport, space and rail projects) to be funded by the Federal Highway Administration, Federal Transit Administration and the Federal Aviation Administration. The TIP for the Brevard Urban Area is developed and updated annually under the direction of the TPO as one of several prerequisites for continued receipt of federal assistance for transportation improvements. Information concerning transportation improvement projects funded with local sources is also included, when provided by local governments.

The FY 2010 to FY 2014 TIP for the Brevard Urban Area was adopted on July 9, 2009. Amendments were passed on November 12, 2009; February 11, 2010; April 8, 2010; May 13, 2010 and July 8, 2010. Along with a web-based interactive TIP program, which provides critical information in a flexible format and allows visitors to generate either the entire TIP document or a smaller custom designed document with only projects of particular interest is available through a link on the Space Coast TPO website at [www.spacecoasttpo.com](http://www.spacecoasttpo.com).

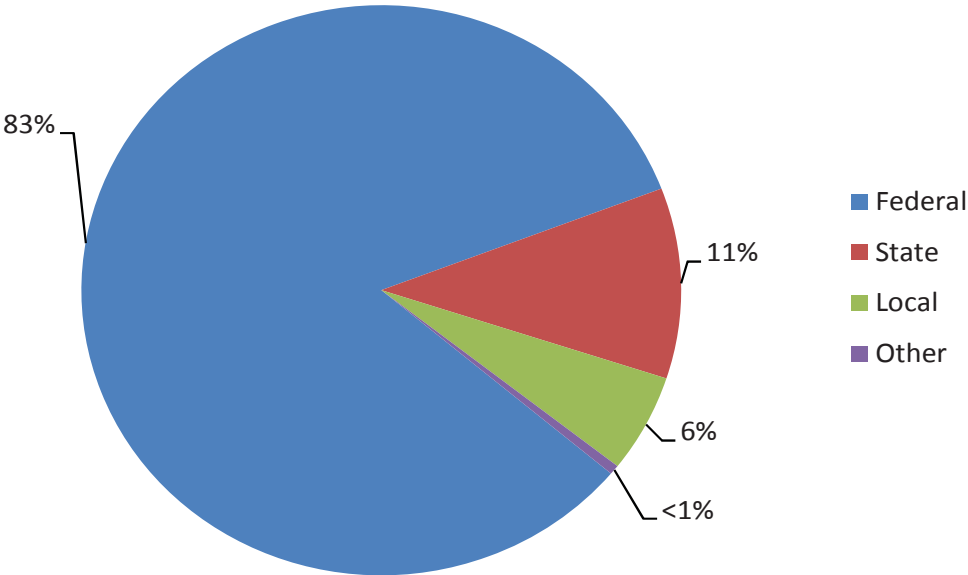


### Unified Planning Work Program

Federal and State regulations require that a Unified Planning Work Program (UPWP) be prepared every two years for the Brevard Urbanized Area. The UPWP identifies in a single document the bi-annual transportation planning studies, planning activities and budget needed to identify and evaluate transportation needs throughout Brevard County. In essence, the UPWP is a working budgetary document.

Each task contains a description of work accomplished during the prior UPWP, the methodology that will be employed in the upcoming years, the responsible agency, programmed budget and funding sources. Funding is provided through Federal and State grants. Local funds are required as a match for some grants which is generally provided by the County's Local Option Gas Tax (LOGT).

### FY 09-10: Expenditures by Fund Source



# Intergovernmental Coordination

## Regional Planning

The Space Coast TPO coordinates with other Central Florida Metropolitan Planning Organizations/Transportation Planning Organizations to address regional transportation issues and needs. Emphasis is placed on addressing programs, facilities and systems which serve National, State and regional transportation functions. TPO staff work with numerous agencies and organizations to increase coordination and secure funding for transportation projects in Brevard.

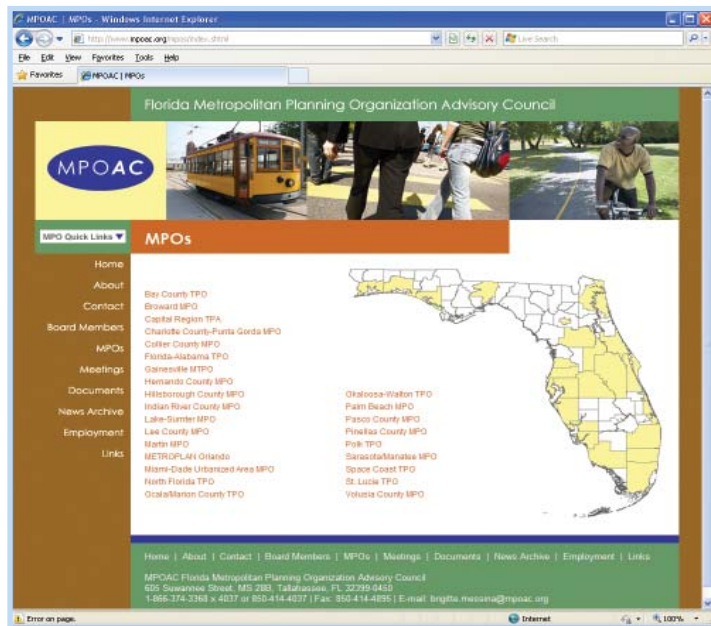
TPO staff participate in the **Central Florida MPO Alliance**, a coalition of transportation and government organizations committed to addressing transportation challenges on a regional basis. The Alliance is comprised of representatives from Metroplan Orlando, Ocala/Marion TPO, Space Coast TPO, Volusia TPO and the Lake-Sumter MPO.

TPO staff participate in the Florida Department of Transportation's District 5 quarterly Director's meetings. This forum provides an opportunity for FDOT and MPO/TPO staff to provide program updates.

TPO staff continue to work with the Florida Department of Transportation's District 5 staff and Long Range Transportation Plan Committee (LRTP) to assure coordination among Central Florida MPOs/TPOs throughout the 2035 LRTP development process.

**The Florida Metropolitan Planning Organization Advisory Council (MPOAC)** is a Statewide transportation policy and planning organization created by the Florida legislature to augment the role of individual MPOs/TPOs in the cooperative transportation planning process. The MPOAC serves as the principal forum for collective MPO/TPO policy discussions.

Members of the governing board consist of local elected officials from each of the MPOs/TPOs and a Staff Directors Advisory Committee. The MPOAC actively participates in the activities of the National Association of MPOs and the National Association of Regional Councils and works with other stakeholder groups to help shape State and National policy(ies) regarding metropolitan transportation issues.



# Local Planning

## Local Planning

The TPO is continually looking to expand its community outreach efforts. Working with numerous partners, each year new safety programs and partnerships are initiated.

## Community Traffic Safety Team (CTST)

During FY 2010, TPO staff continued to support and participate in the Brevard Community Traffic Safety Team (CTST). The CTST is comprised of individuals from both the private and public sector, representing law enforcement, engineering, emergency medical services, education, transportation planning and the general public. The CTST provides a forum through which members can bring forward traffic safety concerns (i.e. intersection improvements, crosswalks, signage, traffic lights, and speed limit issues) for FDOT to study. Together, members work on projects with the ultimate goal of reducing the number of fatalities, injuries and the severity of injuries due to crashes on roadways within Brevard County.

Over the years, the CTST has developed and participated in numerous traffic safety programs. The Brevard CTST is also represented in the State CTST Coalition, which meets quarterly to share and develop programs for use throughout the State.

The CTST conducted 11 regular meetings during Fiscal Year 2010, with special presentations addressing such issues as distracted driving with the “Hang Up and Drive” Program and railroad safety with an Operation Lifesaver Presentation.

Other presentations included the new Inter-Active Web Based Traffic Counts, and Transportation Improvement Programs, an overview of Brevard County’s Traffic Crash Database system and a Safety Grant Program and Application Process overview.

## Traffic Incident Management Team (TIM)

TPO staff participates in the FDOT Traffic Incident Management (TIM) Program brings together all agencies involved in clearing a traffic crash from the roadway. TIM Teams consist of representatives from all of the responding agencies and service providers. They review past response actions and explore ways that incident management can be improved on the roadways they serve. Program areas addressed by the TIM include: incident detection, verification and response, incident clearance, communications and training.

## Long Range Transportation Plan (LRTP) Advisory Committee

To assure continued communication and coordination during the development of the 2035 Long Range Transportation Plan, the Space Coast TPO formed a Long Range Transportation Plan Advisory Committee. The members, representatives from local governments, FDOT and transportation providers, assure local input is included throughout the LRTP developmental process. The Committee completes the initial review process as tasks are completed, prior to being presented to the TAC/CAC and TPO.

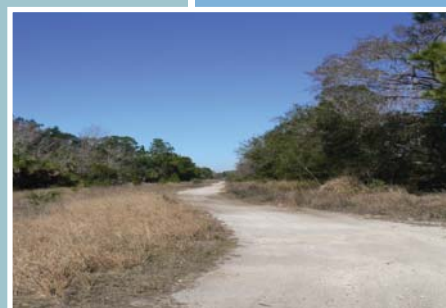


# Bicycle/Pedestrian

## Bicycle/Pedestrian Safety Programs

Bicycle and pedestrian modes of travel are recognized as cost-efficient ways to address mobility and air quality concerns while improving physical health and quality of life. Since the mid-1980's, the Space Coast TPO has recognized the need for bicycle and pedestrian planning. General tasks of the Bicycle/Pedestrian Safety Program include:

- Providing technical assistance and coordination to staff from the County, local municipalities, School Board and State agencies during the planning and public involvement process for the design and implementation of bicycle, pedestrian and trail facilities.
- Reviewing site plans for new developments, upon request, to assure adequate bicycle and pedestrian facilities are provided.
- Reviewing County and local government planning documents and policies to ensure consistency among agencies in providing adequate consideration of bicycle and pedestrian facilities during the planning process.
- Assisting with the prioritization of Federal and State funds allocated for bicycle and pedestrian facilities, scenic routes, beautification and other enhancements which can provide alternative transportation corridors, increase opportunities for recreation, accessibility and safety beyond traditional highway programs.
- Coordinating and conducting workshops, trainings and conferences.
- Creating safety programs and outreach materials.
- Mapping existing and planned multi-use trails, on-street bicycle routes and sidewalks.
- Conducting community outreach events.



## Bicycle/Pedestrian And Trails Master Planning

During FY 2010, work continued on the development of the “Bicycle, Pedestrian and Trails Master Plan”. The intent of the Plan being to serve as a regional visioning foundation for non-motorized transportation access and mobility. Completed work tasks included a countywide inventory of existing and proposed bicycle, pedestrian and trail facilities and identification of gaps in the network. Special emphasis was placed on safe school access routes. To assure a comprehensive intermodal “2035 Long Range Transportation Plan” (LRTP), work that has been completed on the “Master Plan” will be incorporated into the LRTP.

## Safe Routes To School (SRTS)

Development of “Feet Not Fuel” a Community Education Outreach Program, continued during FY 2010. “Feet Not Fuel” is targeted at school age children, parents, teachers and community leaders. This educational program emphasizes the economical, ecological and exercise/health benefits of walking or biking to school.

The “Feet Not Fuel” website, [www.FeetNotFuel.com](http://www.FeetNotFuel.com), was pilot tested to solicit suggested refinements from a sampling of the intended target user group. This website includes a “doodle” page, safety quiz, carbon footprint calculator and theme song. Refinements to the site are being finalized and the program will be unveiled and initiated as a school program in the October 6, 2010 Walk to School Day events.



## Walk To School Day

Since 1998, the Space Coast TPO has partnered with Brevard Public Schools to promote and coordinate Walk to School Day events. On October 7, 2009, thirty schools throughout Brevard County participated in the International Walk to School Day. Parents, teachers, community leaders and students gathered at pre-selected locations for the morning walk to school. TPO staff worked in conjunction with school officials, FedEx, Brevard Safe Kids and other partners to assure a safe, coordinated, and successful event.



## Bicycle/Pedestrian Safety Education Programs

The Space Coast TPO has coordinated bicycle and pedestrian safety programs since 1988. The programs have grown into one of the most successful and recognized programs in the State of Florida.

The TPO provides trainings, coordination and program support materials needed to conduct in-school “hands on” bicycle and pedestrian State approved curriculum in elementary school Physical Education (P.E.) classes. In FY 2010, approximately 16 schools conducted this three week comprehensive safety program. There are over 50 P.E. teachers in Brevard (certified through TPO trainings) to conduct these safety classes.

Through community partnerships with Brevard Safe Kids, the Florida Department of Health, and the Florida Epilepsy Foundation, 2,500

bicycle helmets were distributed (free) to qualifying children throughout Brevard County. Qualified staff provide helmet fittings as well as proper education and instruction on how to correctly wear the helmet.

Bicycle Rodeos are another education effort conducted at various events like community health and safety fairs. TPO staff coordinate these events and provide the necessary equipment for setting up and running the rodeos (cones, signs, etc.). During FY 2010 TPO staff coordinated approximately 74 rodeos and community education events throughout Brevard. These events reached over 8,000 Brevard County residents.

A free-loan video library continues to be maintained at the TPO staff office, which includes a variety of traffic safety titles. Brochures, pamphlets and other educational materials are also available. Additional information is available by contacting the Bicycle/Pedestrian Education Program Coordinator at our office.

# Showcase Trails

## Regional Rail Trail

On December 31, 2007, the Florida Department of Environmental Protection's (DEP) Office of Greenways & Trails officially took ownership of the longest rail trail in the State, the "East Central Florida Regional Rail Trail." This 46-plus mile corridor (eleven miles are in Brevard County) has been leased to Brevard and Volusia counties for development and maintenance. The trail will pass through Titusville, wandering through rural areas, neighborhoods and into downtown. The trail head is funded to be constructed at the Chain of Lakes Park in north Titusville. Proposed trail uses include cycling, hiking, running, skating, equestrian and viewing of wildlife and natural vegetation.

In FY 2010 the second of three public information workshops were held as part of the Preliminary Engineering Report. The Brevard was held in Titusville on September 21, 2009.

Brevard and Volusia counties have Federal/FDOT tentative funding for future design and construction activities from FY 2011 through FY 2015.

## North Merritt Island Pioneer Trail

The North Merritt Island Pioneer Trail ground breaking ceremony was held on January 28, 2010. The Pioneer Trail, located at Kings Park between Chase Hammock and Hall Road, is a critical link in the proposed North Merritt Island Trail System that will connect communities to neighborhoods, parks and conservation areas. This project includes a 10 foot paved trail, boardwalks, pavilions, kiosks and parking. Transportation Enhancement grants administered by FDOT and the TPO will provide full funding for design and construction. Transportation Stimulus funding enables the paved trail and trailhead to be constructed within the same time frame. Construction of trail and boardwalks are underway, the trailhead is scheduled for construction in the Fall of 2010.

The image shows the cover of a newsletter titled "East Central Regional Rail Trail" with the subtitle "Developing green space opportunities in east central Florida." The cover features logos for Volusia County, Brevard County, and the Florida Department of Transportation (FDOT). It includes a "Study Conducted" section detailing the project's scope and objectives, a "Second Public Workshop Conducted" section with dates and locations, and a "Project Location" map showing the trail route through Volusia and Brevard counties. A "Future Project Phasing" section lists funding sources and construction activities.

East Central Regional Rail Trail progress update newsletter available at [www.spacecoasttpo.com](http://www.spacecoasttpo.com)



Hikers on existing Pioneer Trail.

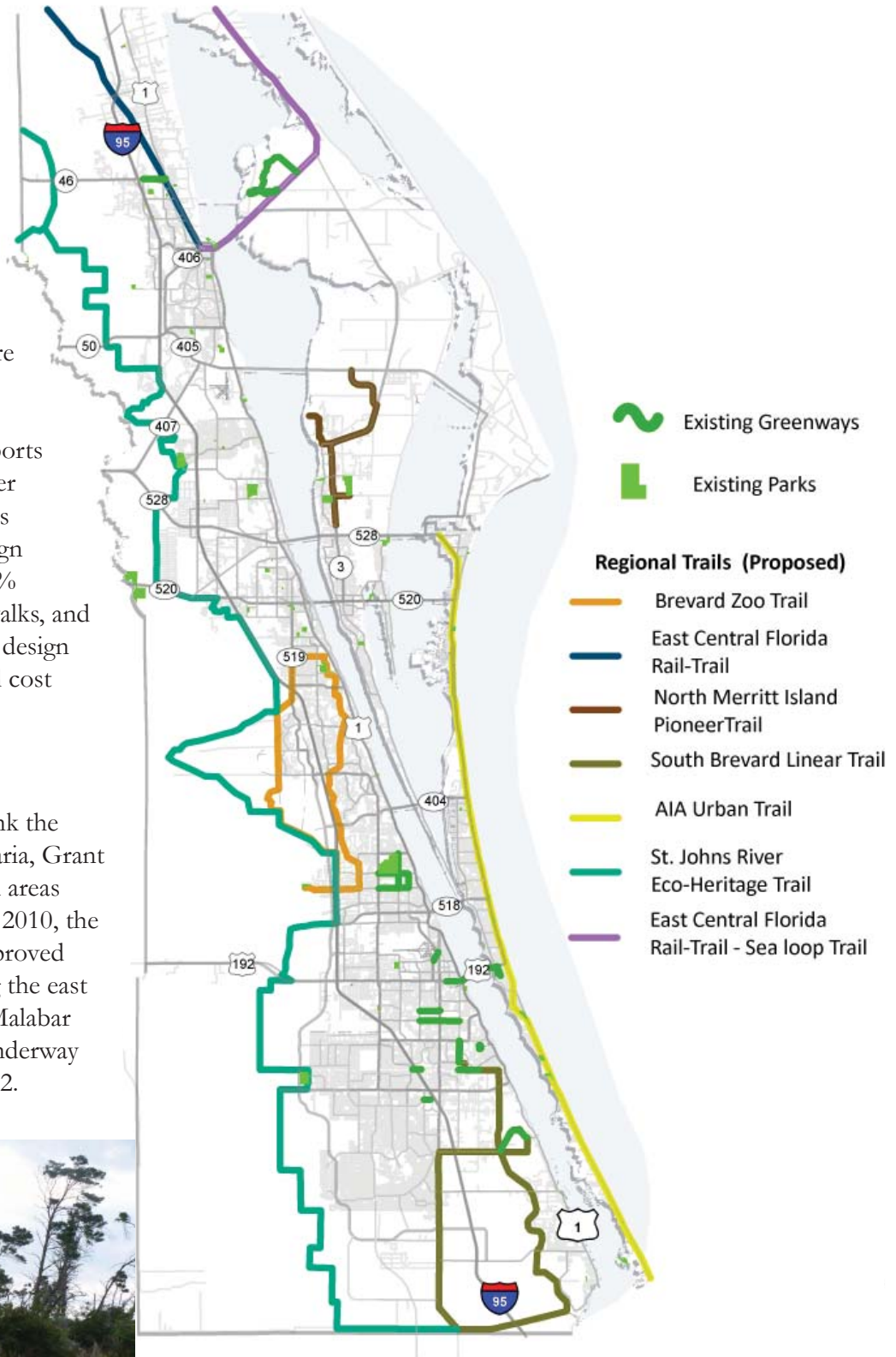
## Brevard Zoo Linear Park

The Brevard Zoo Trail is located in central Brevard County. This 3.5 mile long trail will run from the Brevard Zoo to south Turtle Mound Road. The trail is being designed as a multi-use trail with boardwalk elements where it crosses environmentally sensitive lands. During FY 2010 FDOT constructed a Con-Span Structure to provide a tunnel under the new I-95 Pineda interchange for the future Zoo Trail.

Brevard County Parks and Recreation reports that permit applications for St. Johns River Water Management District and Site Plans were received in October 2009. The design for the paved Zoo road extension is 100% complete and includes a cul-de-sac, sidewalks, and paved parking for a trail head. Currently, design modifications, inter-local agreements, and cost estimates are being developed.

## South Brevard Al Tuttle Trail

The South Brevard 'Al Tuttle' Trail will link the communities of Malabar, Palm Bay, Valkaria, Grant and Micco to existing parks, conservation areas and community destinations. During FY 2010, the Malabar Scrub Management Plan was approved with the proposed paved trail, connecting the east end of a Boundary Canal Trail south to Malabar Rd. Currently the design of the trail is underway and construction is scheduled for FY 2012.



# Space Coast TPO

## Certification

Federal law requires that the Federal Highway Administration (FHWA) and the Federal Transit Administration (FTA) certify the TPOs/MPOs planning process every four years. In general, this process is a review of the various work products, policies and procedures to assure conformance with all applicable rules and regulations. Additionally, each year the Florida Department of Transportation and the TPO must jointly certify the metropolitan planning process.

On, April 6 – 8, 2010, the Federal and State certification processes were conducted. Based on the overall findings by the FHWA/FTA team the TPO substantially meets federal planning requirements and has earned certification that will remain in effect until September 2014. The final report recognized that the TPO has made significant improvements to the transportation planning process since the last certification review in 2006. There were four corrective actions recommended in the certification report: The TPO needed to have a Title VI Non-Discriminatory policy, a named Title VI coordinator, Complaint filing procedure, and a Limited English Proficiency Plan. All or these corrective actions were addressed by TPO staff and presented to the TPO Board.

## Public Participation Plan (PPP)

Public participation is a proactive process which is important when developing comprehensive transportation plans. The Space Coast TPO strives to provide the public with thorough information on transportation planning services and project development in a thorough and timely manner. The intent of this process is to allow all residents and business interests the opportunity to share their opinion on community needs and issues.

The TPO's Public Participation Plan is a working document that identifies public participation techniques used and the importance of evaluating those techniques for continuous improvement. The PPP was evaluated, updated and adopted by the TPO on April 8, 2010 and is available on the TPO's website:

[www.spacecoasttpo.com](http://www.spacecoasttpo.com).

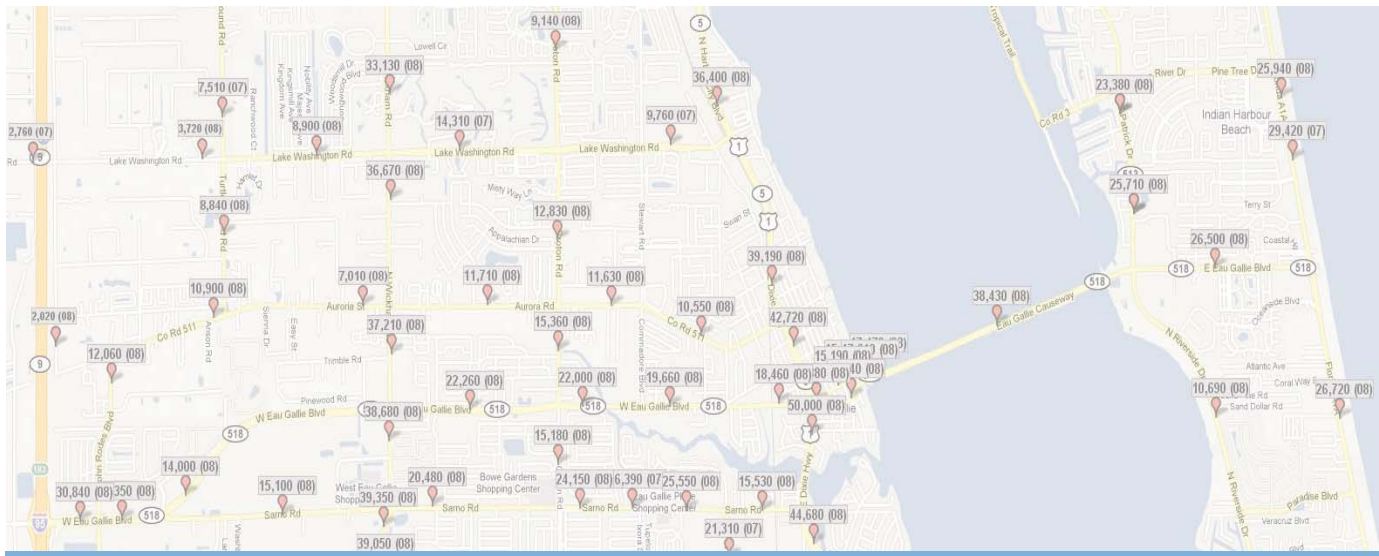
## TPO Public Outreach

Our TPO staff is available to provide presentations at civic, business and homeowners association meetings or events and conducts bicycle rodeos and other safety trainings. To learn more about these opportunities, or to request a speaker for your organization, contact TPO staff by calling 321-690-6890 or visit our website, at [www.spacecoasttpo.com](http://www.spacecoasttpo.com), and send an email by clicking on the "Contact Staff" link.

### How To Get Involved:

Everybody should have a say in transportation decisions that affect their lives. There are many ways to take an active role in transportation issues:

- Request a speaker for your neighborhood association, civic group or PTA meeting to discuss transportation issues in your area
- Participate in TPO activities such as "Walk To School Day" events
- Request to be placed on the TPO's contact list for electronic or hardcopy news and notices
- Attend a TPO Board or TAC/CAC Committee meeting
- Watch TPO Board meetings on Space Coast Government Television (Brighthouse Channel 199)
- Attend project workshops and other transportation meetings
- Join the Community Traffic Safety Team
- Visit the TPO website: [www.spacecoasttpo.com](http://www.spacecoasttpo.com)
- Sign up for the TPO E-News on the TPO website
- Contact TPO staff to discuss your questions and/or concerns



## Annual Traffic Count Program

The Space Coast Transportation Planning Organization (TPO) annually collects traffic counts to monitor traffic levels on major arterial and collector roadways throughout Brevard County. The TPO's consultant collects forty-eight (48) hour directional traffic counts by fifteen (15) minute intervals at approximately 500 specified locations. All counts are taken during the weekday period from 12:01 AM, Monday through 12:00 Noon Friday. These traffic counts are used by private citizens, local businesses, local government concurrency management systems, the Florida Department of Transportation (FDOT) and in the State of the System Report. Traffic counts are reported as the Average Annual Daily Traffic (AADT), which means the number of vehicles expected to pass a given location on an average day of the year. To get the AADT, the counts are adjusted using FDOT's Seasonal Adjustment Factors for each roadway segment. The AADT represents the total number of vehicles, in all lanes, in both directions, traveling within a defined segment each day.

Count results are maintained in an interactive Traffic Count Database System which provides current and previous year traffic volumes, count location details, trends, graphs, report and maps. A link to the traffic count site and a historic count list for the last ten years can be found at our website [www.spacecoasttpo.com](http://www.spacecoasttpo.com).

The screenshot displays the Transportation Data Management System (TDMS) web application. The interface includes a navigation menu with options like Home, TMC, TCLS, TIDS, PMS, PMDS, RSMS, PCDS, PMMS, WOTS, and RTTY. The main content area shows a report for a specific location and a corresponding map.

LOCATION	
LOCATION ID:	15
LOCATED ON:	SR 520 WB
AT:	
BETWEEN:	Brevard
AND:	Forrest
TYPE:	LINK
COUNTY:	Brevard
COMMUNITY:	-
DIRECTION:	2-WAY
FUNCT CLASS:	-

GRAPH OPTIONS	
From Date:	(mm/dd/yyyy)
To Date:	(mm/dd/yyyy)
Year:	2008
Display Graph:	DHW Graph
	% Daily Traffic

**Permanent Count Station - 2008**  
 ID: 15 Community: - County: Brevard  
 SR 520 WB Between Brevard & Forrest

The graph shows the percentage of daily traffic over a 24-hour period. The x-axis is labeled 'Hour' (1-24) and the y-axis is '% of Daily Traffic' (0-9). The data points show a typical diurnal pattern, peaking at approximately 8% around hour 18.

The map on the right shows the location of the count station on SR 520 WB. A callout box provides details for a specific count: 'Dir: 2-WAY', 'Fct1 Class: -', '2009 AADT: 22,050', and a 'View Detail' link. Other count locations are visible on the map with their respective values and years.

# Space Coast Area Transit

Public transportation is provided by Space Coast Area Transit, which is a department under the jurisdiction of the Brevard County Board of County Commissioners and operates fixed route buses and trolleys, paratransit, vanpool and volunteer services. Space Coast Area Transit started service in 1991 and celebrated their ten millionth rider on April 14, 2010. Statistics on transit use are tracked annually to provide insights about multi-modal mobility trends and conditions in Brevard.

Space Coast Area Transit has topped one-million riders a year for the last three years, and in 2009 transit ridership increased by over 12 percent. This is a notable increase given the County's slowing growth trends and declining vehicle miles of travel.

The fixed route bus and trolley system operates on a set schedule at designated stops. Fixed route ridership increased by 16 percent from 2008 to 2009, slightly less than the 20 percent increase from 2007 to 2008.

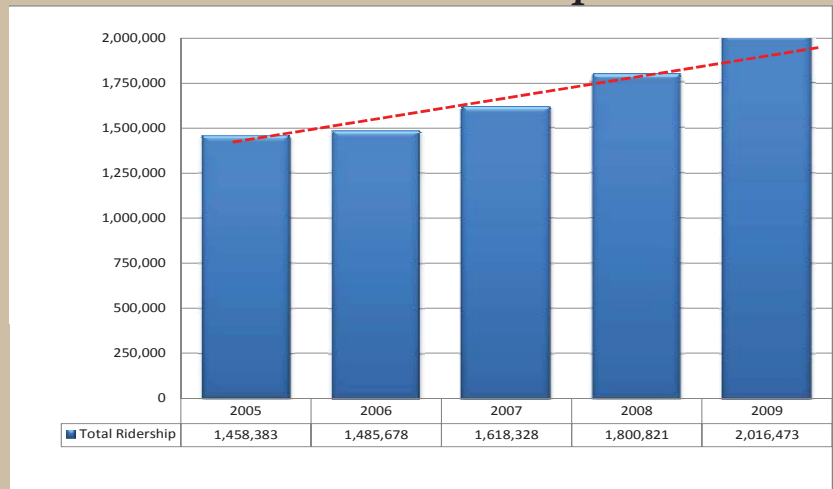
Space Coast Commuter Assistance helps provide alternative ways to travel to and from work, including car/vanpool matching services, employer parking incentive programs, vanpool leasing and other Transportation Demand Management programs. Brevard County has one of the largest Vanpool Programs in the Nation, traveling over 175,000 miles per month, carrying approximately 30,000 passengers per month and logging more than 1,000,000 passenger miles per month.

Paratransit is generally a curb-to-curb service designed to serve the mobility needs of those who are unable to travel by fixed route transit. Space Coast Area Transit operates this service through a trip reservation system. In 2009 the demand response ridership increased by 5 percent, offsetting the 5 percent decline in 2008.

The award winning Volunteers in Motion service is coordinated by Space Coast Area Transit, the Senior Resource Alliance and Community Care for the Elderly program which began in 1996. This service provides reliable transportation to Brevard County residents that are too frail or elderly to ride a bus by themselves.

Space Coast Area Transit's website includes a trip planner (similar to MapQuest) at [www.RideSCAT.com](http://www.RideSCAT.com). Potential riders are able to get a map and text directions from their front door, to the closest bus stop, to their final destination and back again. For more information on Space Coast Area Transit services, please call their information line at 321-633-1878.

## Transit Ridership



# I-95 Project Updates

## Projects Completed

- Six-laning of 12.4 miles from Fiske Boulevard to SR 528. Cost for this design/build project totaled \$148.7 million.
- Resurfacing 12.3 miles of northbound I-95 from the Indian River County Line to Malabar Road. The project included the addition of a second right turn lane at southbound Malabar Road off-ramp and installation of a median barrier from one mile south of Malabar Road to Palm Bay Road. Cost for this design/build project totaled \$5.8 million.

## Construction in Progress

- Six-laning 18 miles from north of Palm Bay Road to Fiske Boulevard, with a new interchange at the extension of the Pineda Causeway. Bridges at Eau Gallie Boulevard and Lake Washington will be widened and new bridges will be constructed at US 192 and Wickham Road. This \$196.3 million project is estimated to be completed in the first half of 2011.
- Widen to six lanes from south of Malabar Road to north of Palm Bay Road, drainage and ITS work to include necessary modifications to existing infrastructure. This project also includes the lighting of interchanges at Malabar Rd., Palm Bay Road, US 192, Eau Gallie and SR 528. The bid was awarded for this design/build contract on August 27, 2009, and work began on October 19, 2009. Estimated completion is Winter 2010.

## Pending Projects

- Six laning 12.5 miles from SR 528 to north of SR 50 and includes the widening of the I-95 bridge over SR 50 and the replacement of the Addison Canal bridge. Design/build firms have submitted proposals and the bids will be opened on August 19, 2010. There is an option in this contract to extend the limits up to south of SR 406 and it may include a sound wall for the Fox Lake subdivision if the extended limits are constructed. The contract should be awarded in late September with construction beginning in early 2011. The scheduled completion date is mid-2013. Preliminary estimated project costs is \$74 million.

- Six laning 2.8 miles from north of SR 50 to south of SR 406. Project construction funding is preliminary estimated at \$25 million, with a planned construction funding year of 2011.

## New Interchanges With St. Johns Heritage Parkway

- Construct new interchange at southern terminus (north of Micco Rd) and local connector. The Federal Highway Administration has approved the Interchange Modification Report (IMR) for the south Parkway interchange.

FDOT is conducting a Project Development and Environment Study to evaluate the new interchange at Mile Post 6.1 on I-95, 1.5 miles north of Micco Road. The project will also

include the evaluation of a multi-lane connector road, approximately 4 miles in length, that will link Micco Road to the southern terminus of the proposed Palm Bay Parkway at Babcock Street. This study began in early January 2010 and is expected to be completed in June 2011.

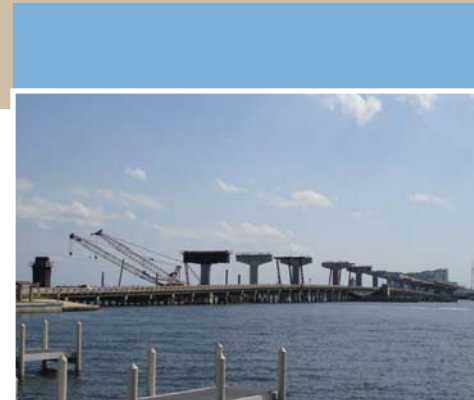
- Construct new interchange at northern terminus and access to Melbourne International Airport. Federal Highway Administration has approved the Interchange Modification Report (IMR) for the north Parkway interchange.

The interchange will be located at I-95 and an extended Ellis Road. This project includes the widening of Ellis Road to 4 lanes. Ellis Road is an important segment that will link the St. John Heritage Parkway and I-95 to the Melbourne International Airport and central Melbourne. Funds have been committed to complete the Project Development and Environment study.

# Project Updates

## Max Brewer Bridge

Construction of the new Max Brewer Bridge began in May 2009. The project includes replacing the moveable bridge with a high level fixed span bridge, replacing the south relief bridge located west of the Max Brewer Bridge and building a 300-foot long fishing pier on the west bank under the north side of the bridge. This new 3,200 foot long bridge is scheduled to be finished in the Spring of 2011.



Max Brewer Bridge construction under way.

## Babcock Street @ US 192 from Melbourne to Fee Avenue

This project is an intersection improvement, adding turn lanes, new signalization and resurfacing, along with drainage improvements. A new roadway lighting system will also be installed. Currently the project is going through right-of-way acquisition and in fall 2010 design plans will be updated to current standards. Construction is scheduled to begin in late fall 2012, with completion in late 2013.

## Babcock Street and SR 514 (Malabar Road) Intersection Improvements

This intersection improvement projects includes widening for new turn lanes and improving the existing new mast arm signalization equipment and resurfacing. Project is currently going through right-of-way acquisition and in the Fall of 2010 the plans update phase will begin. Construction is scheduled to begin the summer of 2010, with completion in late fall 2012.



Construction on US 1 from Park Ave. to Pine St. nearly complete

## US 1 - Park to Pine

The six-laning of 2.6 miles from Park Avenue to Pine Street in Rockledge/Cocoa is nearing completion. This widening project included milling & resurfacing, drainage improvements, traffic signals, sidewalks, lighting and landscaping.

## US 1 and Barnes Boulevard Intersection

Roadway construction at the intersection of Barnes Boulevard and US 1 is anticipated to begin in late summer. Adjustments will be made to the alignment of the traffic signal at the intersection, as well as adjustments to railroad gates. Work on the intersection improvements should begin around August 16, 2010 and will last approximately 5 Months.



US 1 at Barnes Blvd. before construction

## **Apollo Boulevard**

Design is in progress for the widening to a 4 lane divided roadway from 1.9 miles from Sarno Road to Eau Gallie Boulevard. Right-of-way is being acquired through FY 2012, and bids are to be received in FY 2014/2015. Construction costs have been placed in reserve. The estimated cost is \$19 million.

## **Barnes Boulevard**

\$8.1 million is being provided by FDOT in FY 2012/2013 toward a County project to widen Barnes Boulevard to four lanes from Murrell Road to Fiske Boulevard.

## **US 192**

Construction of a second westbound left turn lane at Dairy Road intersection will be complete by late Summer 2010.

## **Wickham Road @ Ellis Realignment**

This realignment project involves construction of a new portion of NASA Boulevard from Atlantis Road to a point on Wickham Road directly across from Ellis Road. The project includes reconstruction of sections of Ellis Road from a point west of Lake Ibis Drive to Wickham Road and construction of new water main for the City of Melbourne. This \$5.49 million project began in March 2010 and is anticipated to take 12 months to complete.

## **Palm Bay Road**

The widening of Palm Bay Road from four to six lanes of 4.5 miles from Minton Road to R. J. Conlan Boulevard has been completed.



# Looking to the Future.....

## **TPO Reorganization**

The Space Coast TPO continues to take steps to assure that the organizational structure is in compliance with FL HB 9895. As required, agreements and other documents are being prepared for TPO Board consideration.

## **Public Involvement and Communications**

One of the TPO's goals is to continue to increase outreach programs throughout Brevard County, specifically:

- Further encourage public involvement in transportation projects;
- Expand safety education programs;
- Further increase program coordination; and
- Expand our partnerships.

Each year we strive to expand these efforts. Public involvement activities will include some new formats during the upcoming fiscal year. Public information sessions will be held at community and civic gathering centers. "TPO E-News", an electronic informational update, continues to keep subscribers current with TPO activities and the number of subscriptions continues to grow.

## **Planning and Design Studies**

Upon request, staff will continue to participate in reviews of planning and design studies.

## **Intelligent Transportation Systems (ITS)**

Work continues toward increasing the use of ITS technology to help manage congestion problems (i.e. by adjusting the timing on signals and monitoring traffic flows).

## **2035 Long Range Transportation Plan Update**

During FY 2011, the Long Range Transportation Plan update process will be completed. The schedule includes plan adoption in late Fall 2010. Public participation opportunities will be included throughout the plan's update. Additional information is posted on the TPO website, or may be obtained from TPO staff.

## **Road Projects**

For an update of road projects, both ongoing and future construction, please refer to Project Updates, on pages 21-23. There are links on the TPO's website for ongoing project updates.

## **Complete Streets**

The Space Coast TPO is looking to develop and conduct a Complete Streets Training for members and interested local agency representatives. The training will emphasize the importance of Complete Streets to a variety of decision makers and technical experts and it will demonstrate how our transportation policies may affect the health and sustainability of our communities. The Complete Streets work order will be reviewed by the TPO board at the July 8th meeting.

## **Web Based Crash Program**

The TPO is looking to implement a web based crash data program to improve transportation safety planning. The crash system will be available to law enforcement agencies, local municipalities, engineers and planners so they can identify safety issues on the transportation network. Staff will be working on the development of the system in the next fiscal year. It will be a valuable tool to help make the roadways in Brevard County safer.

### **East Central Florida Regional Rail Trail**

Staff continues to provide technical assistance and coordination with stakeholders and agency representatives during the development of the Rail Trail Management Plan. The PD&E study is complete and work is being done to make the project a design/build so construction can begin as soon as funding becomes available.

### **Safe Routes to School**

The TPO, in cooperation with the School Board and the Community Traffic Safety Team, received a Safe Routes to School grant from FDOT to fund various interactive activities designed to increase the number of students walking and biking to school.

The Safe Routes to School grant will fund an innovative program: “Feet Not Fuel”. This Community Education Outreach Program will target school age children, parents, teachers and community leaders. It will use an interactive website to raise awareness of the economical, ecological and exercise/health benefits of walking and/or biking to school. It is anticipated that FeetNotFuel.com will be launched in FY 2011.

Safe Routes to School (SRTS) National Course – a comprehensive overview of the need for SRTS engineering, enforcement, and education strategies to improve conditions for walking and bicycling to school and assist participants in developing a Safe Routes to School program for their school and community. This course will be offered on an as-needed basis.

### **Teacher Trainings**

There are several teacher trainings already scheduled for FY 2010. Teachers who successfully complete the SRTS National course will receive a Florida Traffic and Bicycle Safety Education Program Curriculum certification.

# TPO Members

(as of June 30, 2010)

## OFFICERS

Mayor Larry Schultz	City of Rockledge, TPO Chairman
Councilman Milo Zonka	City of Palm Bay, TPO Vice-Chairman
Councilwoman Kathy Meehan	City of Melbourne, TPO Secretary

## MEMBERS

Commissioner Robin Fisher	Brevard County District 1
Commissioner Chuck Nelson	Brevard County District 2
Commissioner Trudie Infantini	Brevard County District 3
Commissioner Mary Bolin	Brevard County District 4
Commissioner Andy Anderson	Brevard County District 5
Commissioner Raymond Sharkey	Canaveral Port Authority
Councilman James McCarthy	City of Cocoa
Councilwoman Kathy Meehan	City of Melbourne
Councilwoman Joanne Corby	City of Melbourne
Councilman Mark LaRusso	City of Melbourne
Councilman William Capote	City of Palm Bay
Councilman Milo Zonka	City of Palm Bay
Councilwoman Kristine Isnardi	City of Palm Bay
Mayor Jim Tulley	City of Titusville
Councilman Conrad Eigenmann	City of Titusville
Councilwoman Stephanie Eley	City of West Melbourne
Mayor Rocky Randels	North Beaches Coalition
Councilman William Higginson	South Beaches Coalition

## NON-VOTING MEMBERS

Georganna Gillette	Brevard TPO Liaison, FDOT District 5
Paul Gougelman	TPO Attorney
Bob Kamm	TPO Staff Director



SPACE COAST

**TPO**



Space Coast Transportation Planning Organization  
2725 Judge Fran Jamieson Way  
Bldg. B, Room 105, MS82  
Viera, FL 32940